



ResMed

AirFit™ F30i

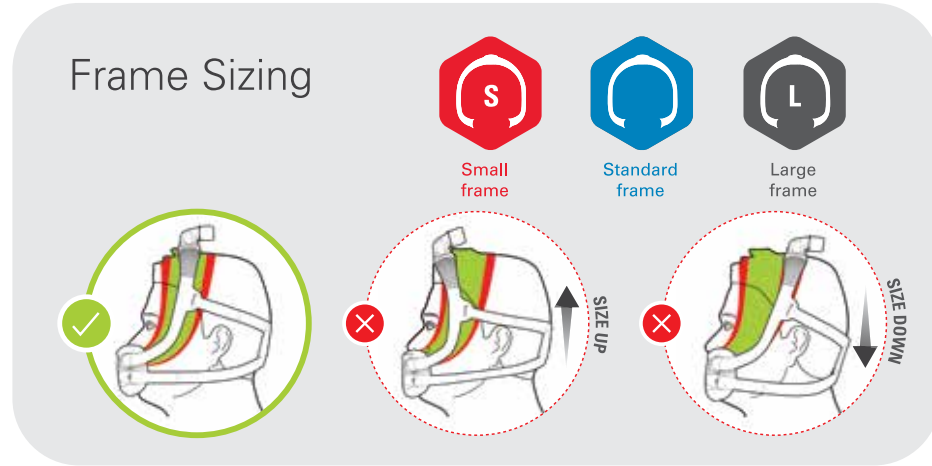
Full face mask

Actual Size: 245mm (Width) x 100mm (Height)

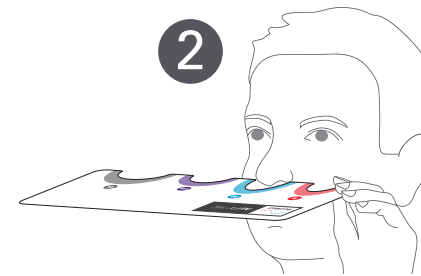
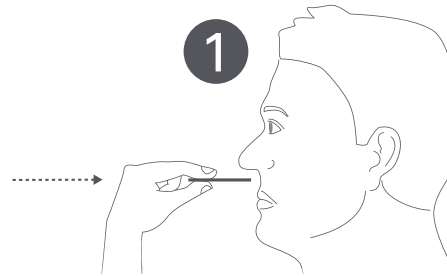
Ruler is for scaling purposes.

How to use the fitting template:

1. Please ensure the template is printed to scale
2. Cut out along dotted line
3. Refer to diagram on template to determine appropriate cushion size
4. Refer to diagram on right to determine appropriate frame size



Cushion Sizing



S

M

SW

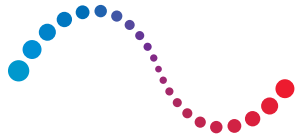
W



Sample size check

10 mm 20 mm 30 mm 40 mm 50 mm 60 mm 70 mm 80 mm 90 mm 100 mm 110 mm 120 mm 130 mm 140 mm 150 mm 160 mm 170 mm

Ruler is for scaling purposes.

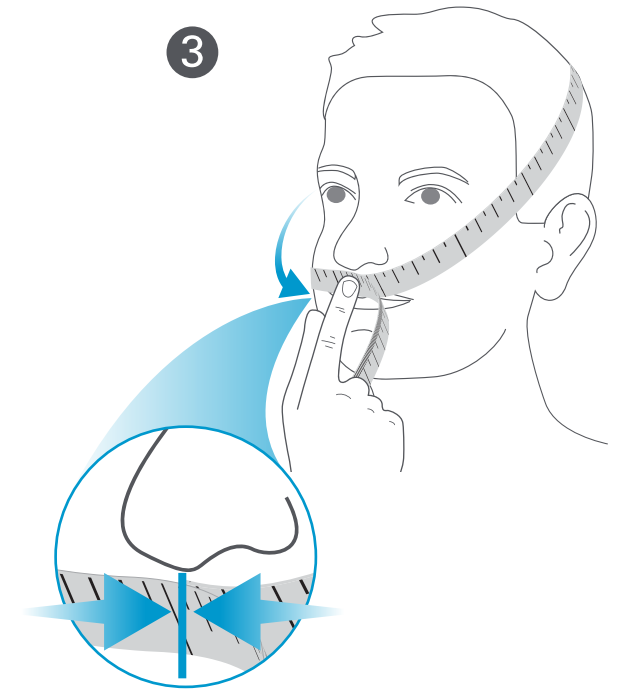
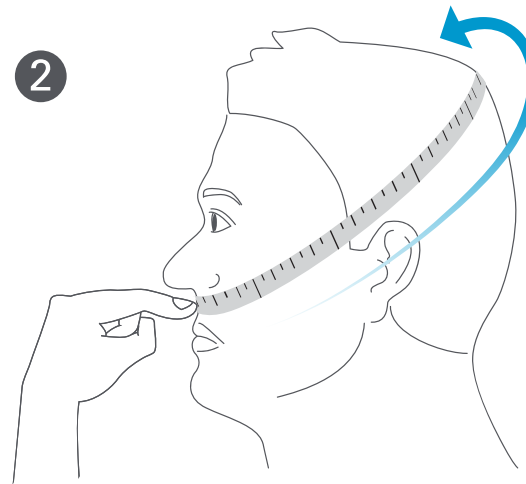
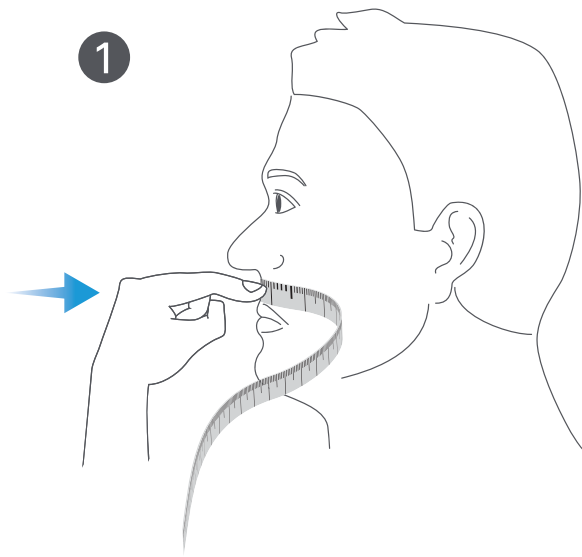





ResMed

AirFit™ F30i

Full face mask

Frame Fitting Instructions



 Small frame	 Standard frame	 Large frame
575-618mm	619-653mm	654-695mm
22⁵/₈" – 24³/₈"	24³/₈" – 25¹¹/₁₆"	25¹¹/₁₆" – 27³/₈"